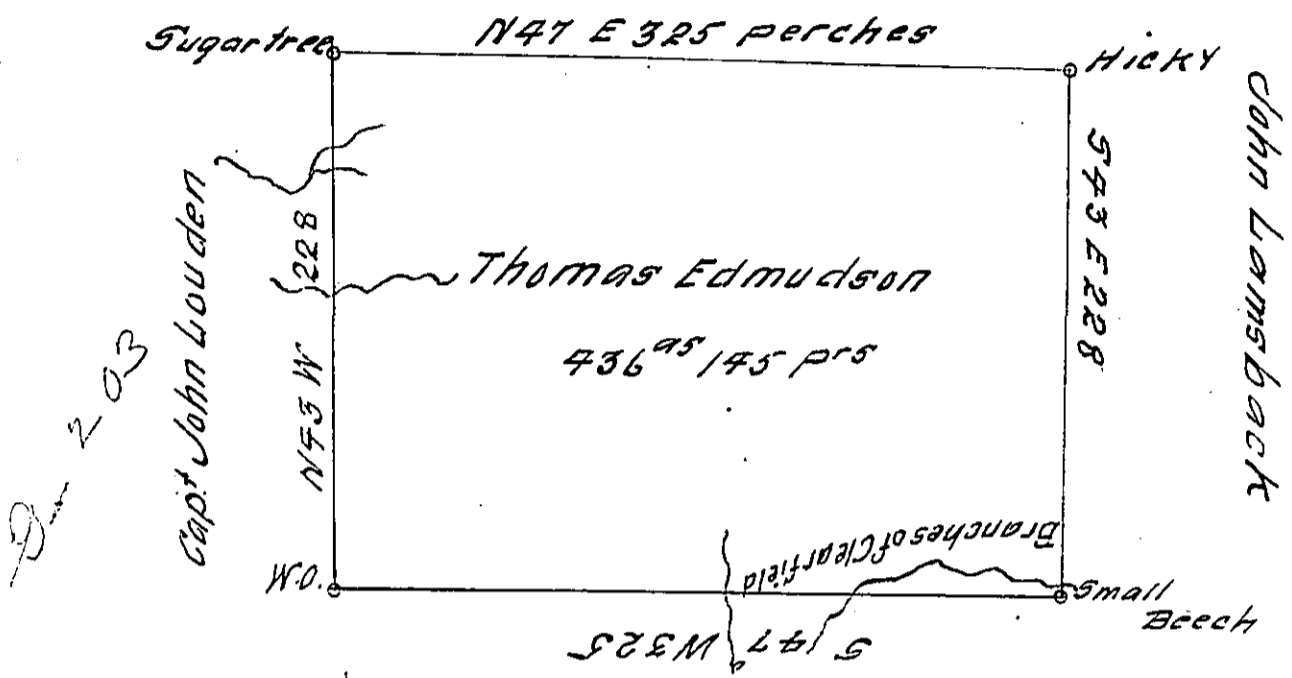


Benj<sup>n</sup> Wilson a-68-47

~~Genl~~ ~~John~~ ~~Canan~~



Pigot Shaw a-29-294

Situate about three miles North Easterly from the head of the Narrows of Clearfield Creek in Franks town Township, Huntingdon County Containing 436<sup>as</sup> 145<sup>ps</sup> & allowance for Roads surveyed the 23<sup>rd</sup> of May 1793 in pursuance of a Warrant dated 21<sup>st</sup> Decem<sup>r</sup> 1792

To Daniel Brodhead Esq } John Canan D.S.  
Sur<sup>v</sup> Genl }

IN TESTIMONY that the above is a copy of the original remaining on file in the Department of Internal Affairs of Pennsylvania, made conformably to an Act of Assembly approved the 16th day of February, 1833, I have hereunto set my Hand and caused the Seal of said Department to be affixed at Harrisburg, this Sixteenth day of February 1912

*Henry Howell*  
Secretary of Internal Affairs.